

WEST PARK HOSPITAL PHASE III

Weekly Progress Report 001

Period ending July 9th, 2014



Cowan Construction, Inc.



AHFD | AMERICAN HEALTH FACILITIES DEVELOPMENT

Weather

Average Daily High Temp	87 F
Min Low Temp	60 F
Average Wind Speed	6 mph
Max Wind Gust	33 mph

Man Power

Number of Workers on Site: 10

Subcontractors on Site

- Basin Mechanical/ NorPac Sheet Metal, Cowan Construction, Empire Lath and Plaster, Rapid Fire Protection, Yellowstone Electric.

Schedule

- Upcoming Meetings – local time
 - Sub Coordination Meeting, 9am MST July 15 – Conference Office
 - Safety Orientation Meeting, 7am MST Daily – Conference Office

Work Progress

Safety:

- Fire extinguishers set and fire exits are clear and accessible.

Permits:

- The City of Cody has issued the Building Permit.
- ICRA permit has been issued to Layton construction. ICRA wall on level 2 south lobby is underway.

Demolition Work:

- Level 2 corridor - Framing, Sheet Rock, Ceiling, and electrical work is all removed.
- Removal of all sand in recesses for bathrooms is complete.
- Removal of sheet rock and electrical is complete at the "Family" room.

Site and Material Prep:

- Removal of window on south east side is complete and doors are installed for access of materials.
- Layout and framing is underway on the west side.
- All door frames for level 2 have arrived and organized in the building.

Electrical:

- Electrical temp power is up and running.
- Main feeders are being run out of electrical rooms.

HVAC:

- HVAC layout is underway and hangers are being installed.

Layton Office:

- Framing and sheet rocking for construction offices are nearly complete. Power and Data are nearly complete.

Upcoming Activities

- Rapid Fire Protection – Removal of corridor sprinkler lines on level 2.
- Basin Mechanical – layout of plumbing and core drilling for trap primers.
- Complete Demo work after ICRA wall is built.

Progress Photos



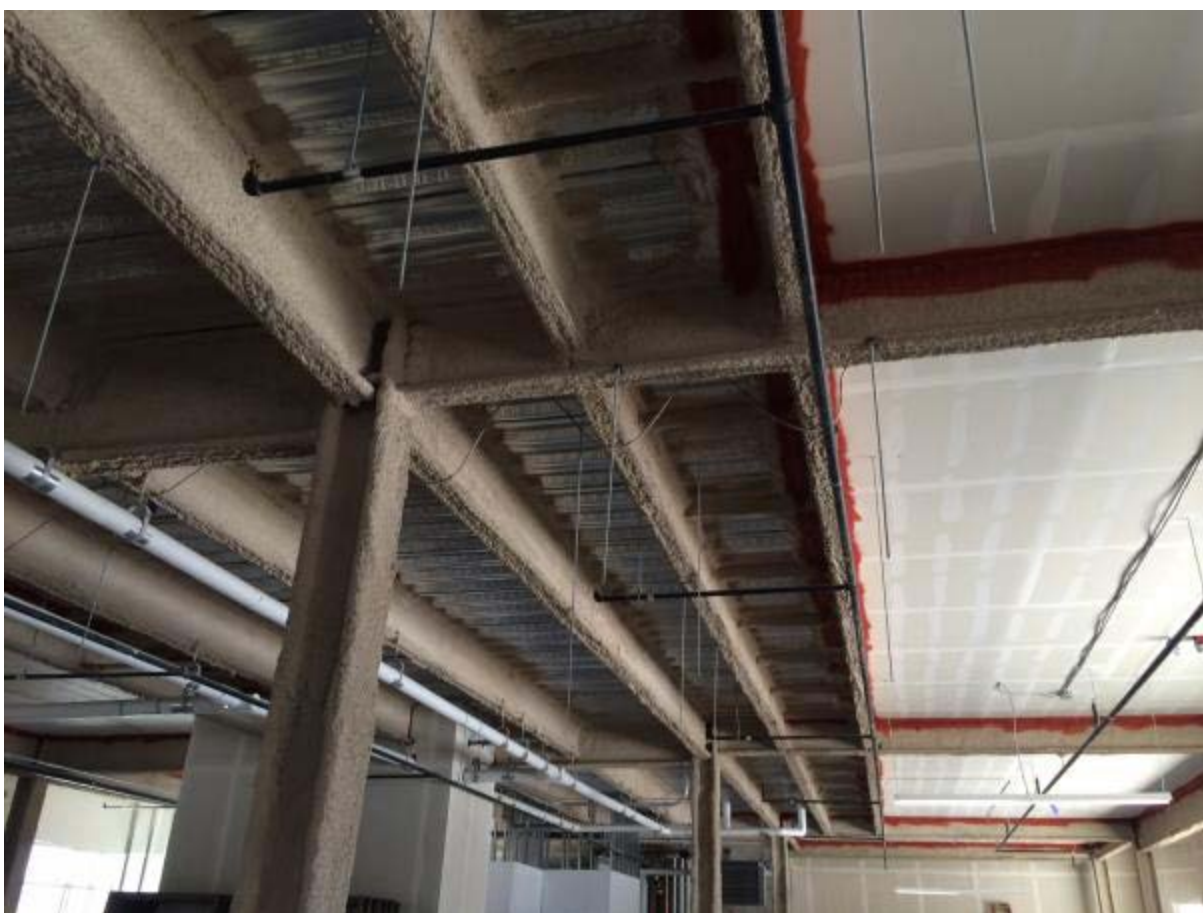
Window has been removed and opening is protected with doors. (Cowan Construction)



Electrical Room – New pony wall has been framed for new electrical gear. (Empire Lath and Plaster)



A load of framing material and all door frames have been loaded onto the 2nd floor. (Empire Lath and Plaster)



Hangers have been installed on the North/West side of the building for duct work. (NorPac Sheet Metal)



Demo work is underway on the "Family" room. Insulation is being saved for ICRA wall (Cowan Construction)



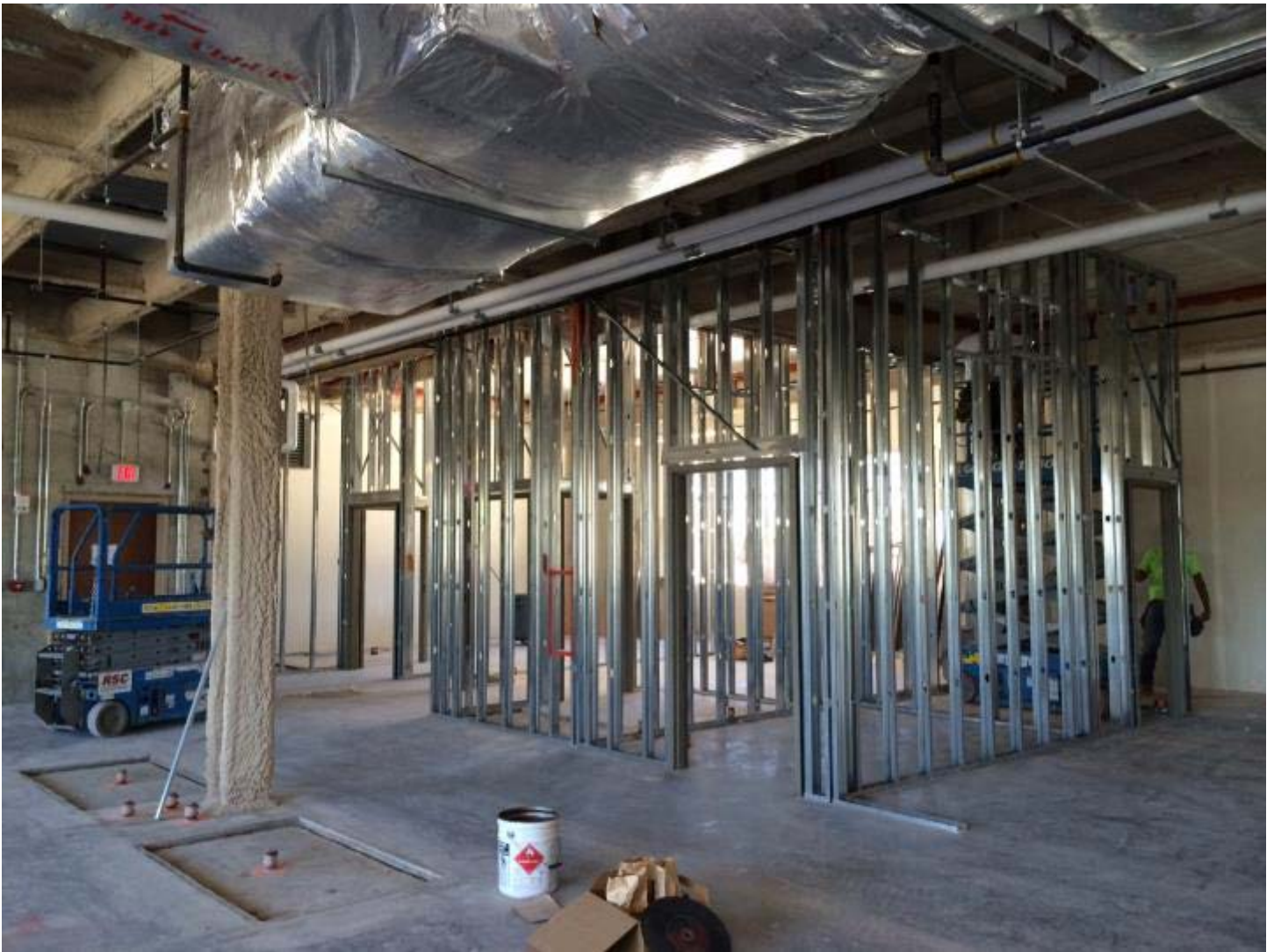
Temp Power is installed though out level 2 (Yellowstone Electric)



Main Electrical feeders (Yellowstone Electric)



Layout and framing is underway on the west end. Red paint to identify rated walls. (Empire Lath and Plaster)



Framing is underway on west end of the building. (Empire Lath and Plaster)